





浙江正昌锻造股份有限公司  
ZHEJIANG ZHENGCHANG FORGING CO.,LTD



ISO:14001  
ISO/TS:16949

# PRESENTATION OF ZHENGCHANG FORGING





# 浙江正昌锻造股份有限公司

## ZHEJIANG ZHENGCHANG FORGING CO.,LTD



ISO:14001  
ISO/TS:16949



30 minutes from Shanghai by Air  
3 hours from Hangzhou by bullet train  
2 hours from Ningbo by bullet train





# 浙江正昌锻造股份有限公司

## ZHEJIANG ZHENGCHANG FORGING CO.,LTD



ISO:14001  
ISO/TS:16949

### Basic Information



**Location:** Rui`an, China  
**Founded:** 1988  
**Registration capital:** 20 million RMB  
**Employee:** 500 people  
**Landing:** 50000 m<sup>2</sup>  
**Product:** auto parts, electric parts  
**Process:** Forging, Machining  
**Output:** Forging 18000 Tons  
Machined 5million pcs

**QMS:** ISO/TS:16949  
**EMS:** ISO:14001  
**Market:** Automotive industry  
Electric industry

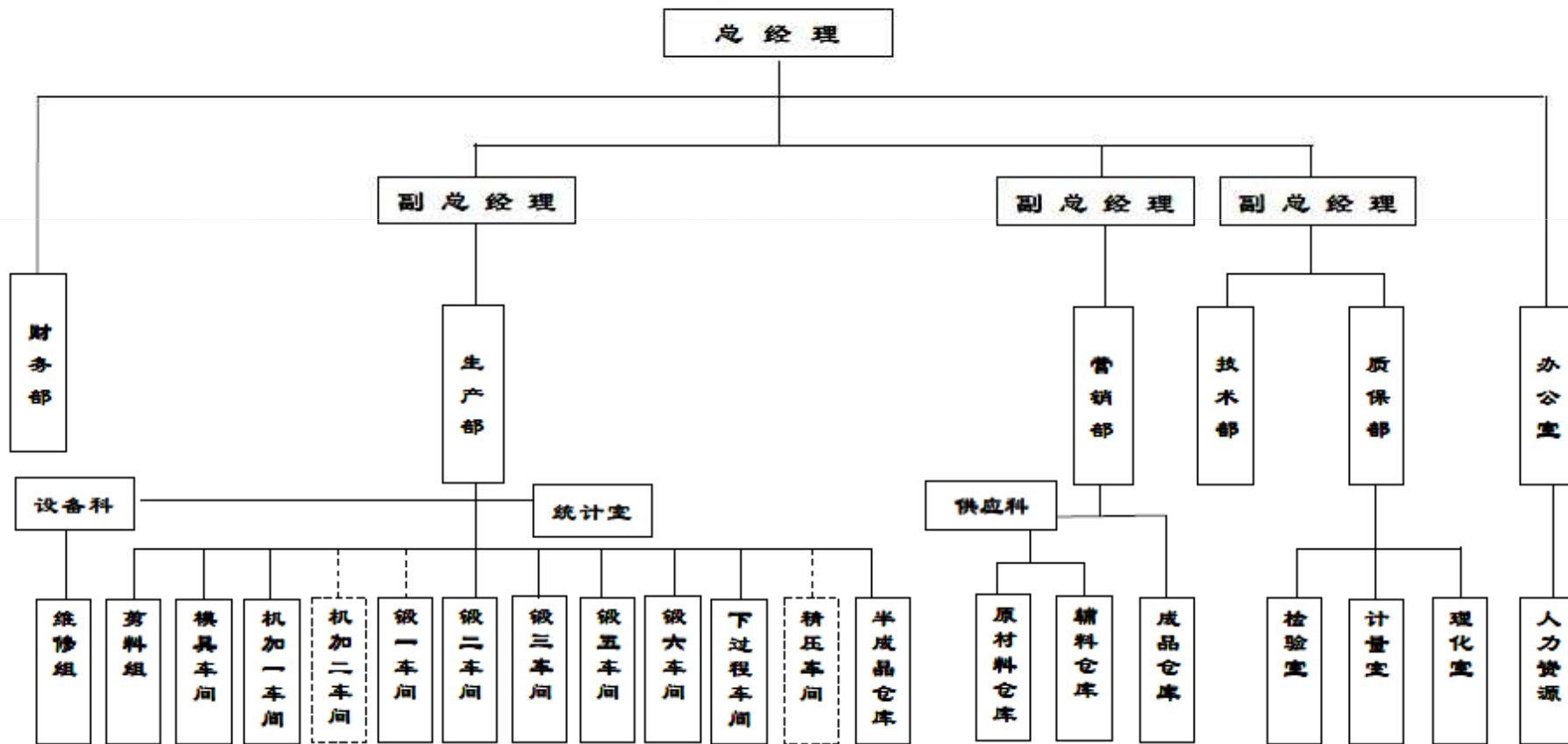




### 浙江正昌锻造股份有限公司行政组织机构图

附录 A

版本/修改: B/0





# 浙江正昌锻造股份有限公司

## ZHEJIANG ZHENGCHANG FORGING CO.,LTD



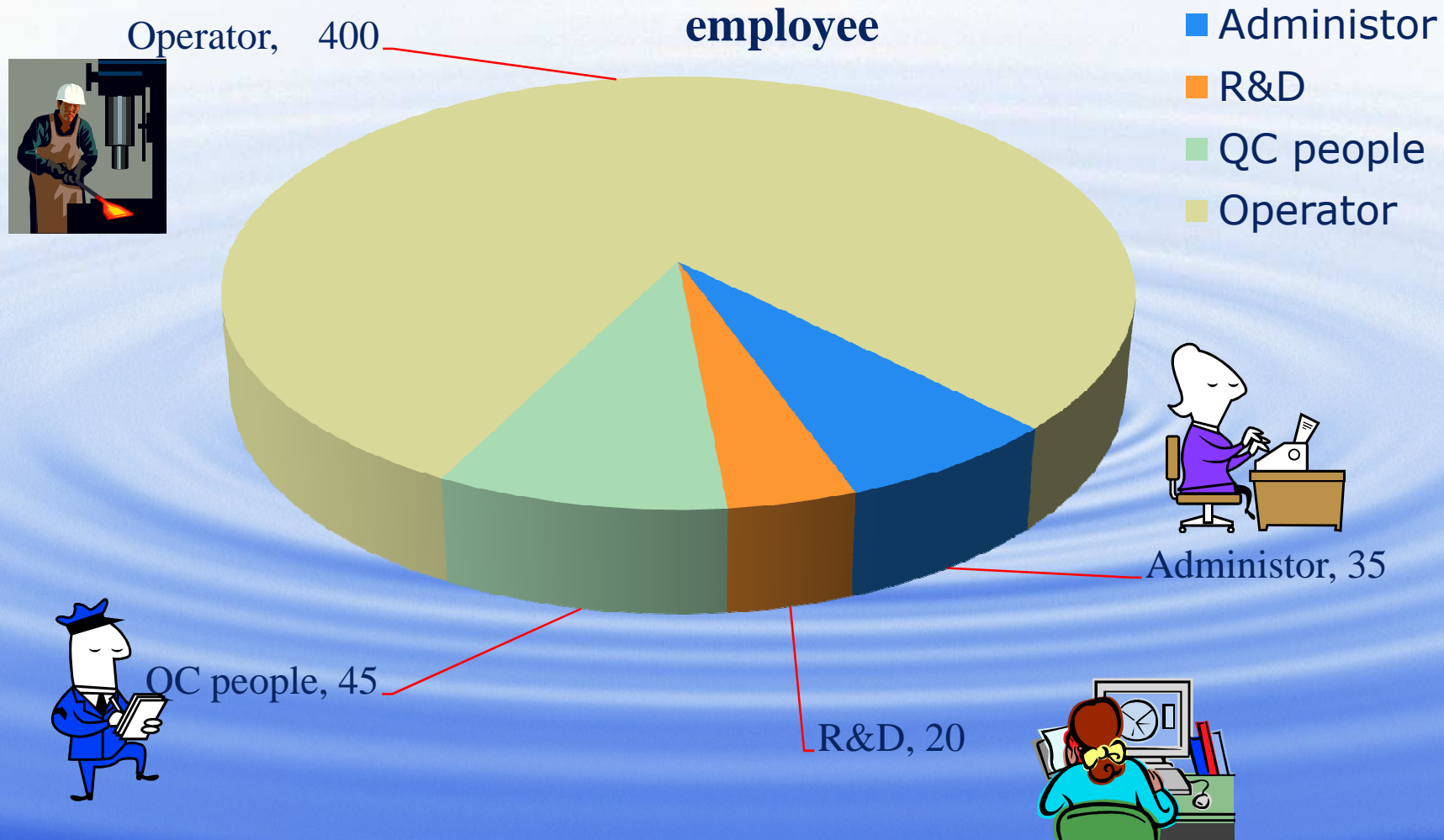
ISO:14001  
ISO/TS:16949

### Development history

- 1988, establishment of Rui`an Qianjin Forging factory
- 1995, supplier to Shanghai Gear General Factory
- 1998, establishment of Rui`an Zhengchang Forging Co.,ltd
- 2000, supplier to Eaton truck parts (shanghai) 。  
Applied ISO:9001 Quality management system
- 2002, T2 supplier to China First Auto Workshop. (FAW Changchun)
- 2003, supplier the largest heavy duty truck Gearbox manufacturer—  
Shanxi Fast Gear group and  
World 500,Electric Giant—Schneider Electric.
- 2006, supplier to Great wall motor—the first Chinese auto company  
who successfully sell autos to Europe market.
- 2006, T2 supplier to Beijing HYUNDAI.
- 2007, Applied ISO/TS:16949 quality management system.
- 2008, Applied ISO:14001 Environmental Protection system
- 2009, supplier to the most fast growing autos company--BYD motors.
- 2010, supplier to Hangzhou HAVECO Automotive Transmission Co., Ltd  
supplier to Vibracoustic (Yantai)
- 2011,supplier to SANY Group

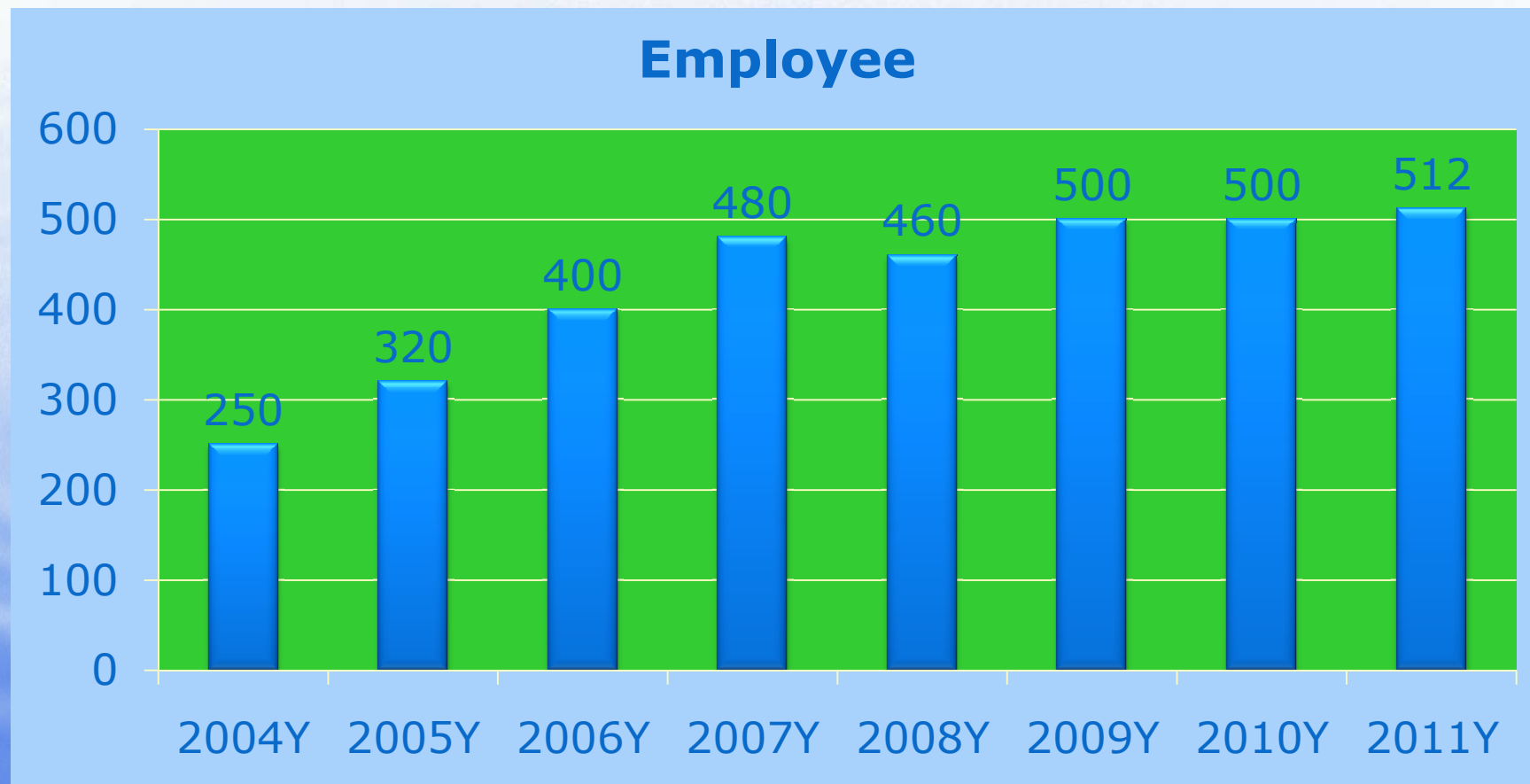


### Employee deployment ( Total 500 people )





### 3. Employee







## Sales value





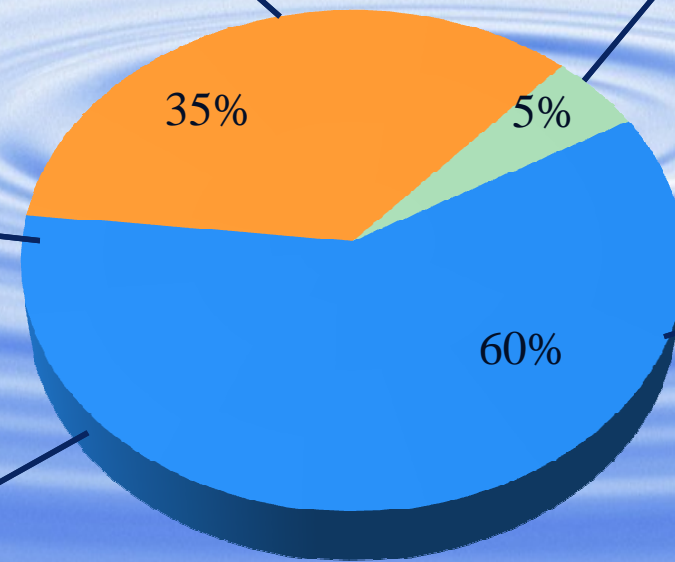
# 浙江正昌锻造股份有限公司

## ZHEJIANG ZHENGCHANG FORGING CO.,LTD



ISO:14001  
ISO/TS:16949

### Main business field



■ automotive ■ electric ■ other machinery



# 浙江正昌锻造股份有限公司

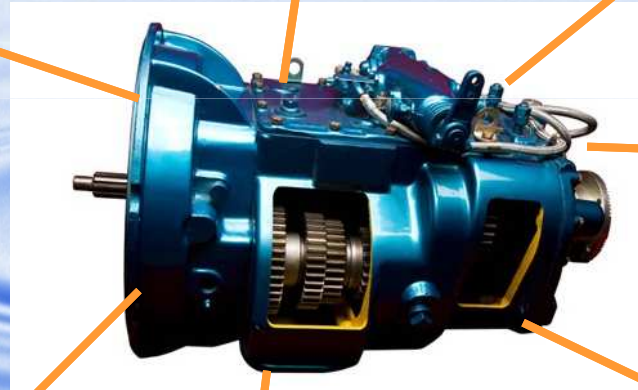
## ZHEJIANG ZHENGCHANG FORGING CO.,LTD



ISO:14001  
ISO/TS:16949

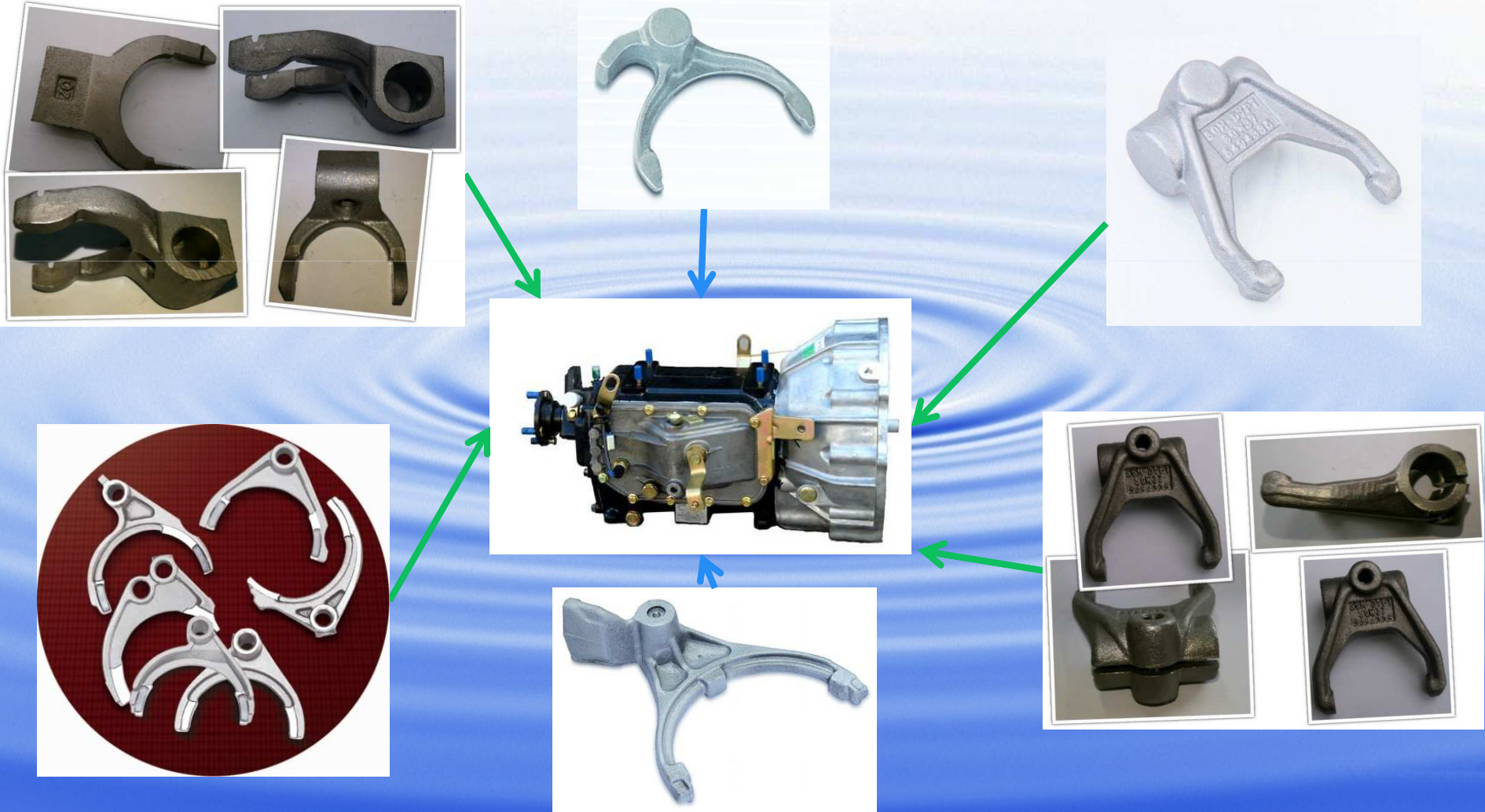


**Fuller, Eaton series  
gear shift fork  
shifter arm**





## Commercial Vehicle and passenger vehicle parts





Commercial Vehicle and passenger vehicle parts





Forged Gear Blank





浙江正昌锻造股份有限公司  
ZHEJIANG ZHENGCHANG FORGING CO.,LTD



ISO:14001  
ISO/TS:16949

## Railway industry





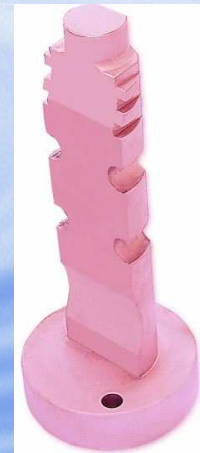
Other machinery products







### ❖ Electric parts



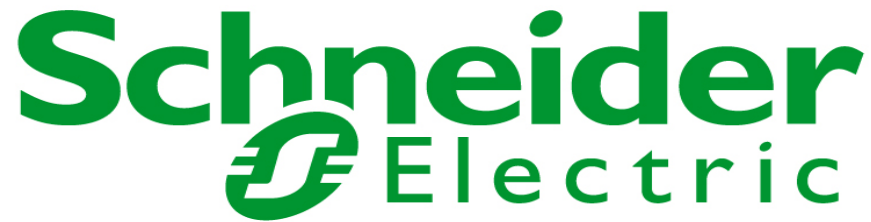


# 浙江正昌锻造股份有限公司

## ZHEJIANG ZHENGCHANG FORGING CO.,LTD



### Main customers





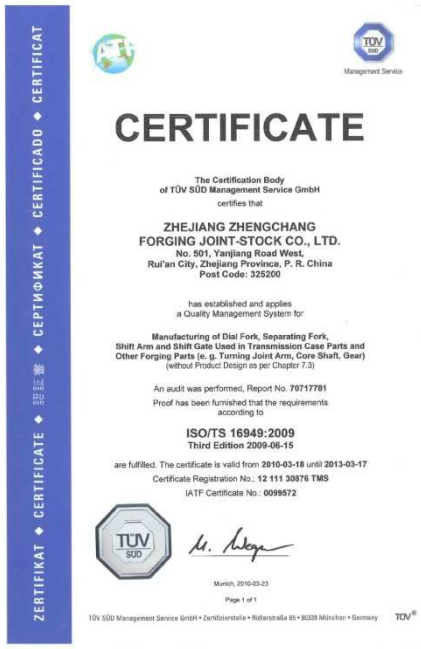
# 浙江正昌锻造股份有限公司

## ZHEJIANG ZHENGCHANG FORGING CO.,LTD



ISO:14001  
ISO/TS:16949

## Honors and certificates



- 2007 ISO/TS:16949 certified by TUV
- 2008 ISO:14001 certified by Head of NQA
- 2008 Zhejiang Famous brand certificate
- 2009 High and New Tech Enterprise of Zhejiang





# 浙江正昌锻造股份有限公司

## ZHEJIANG ZHENGCHANG FORGING CO.,LTD



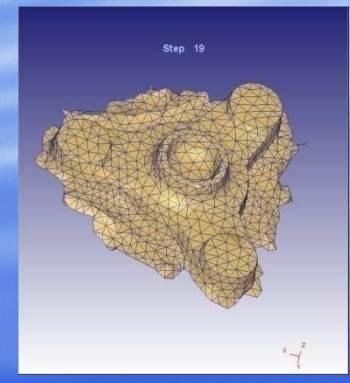
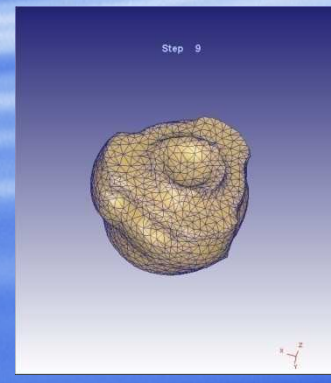
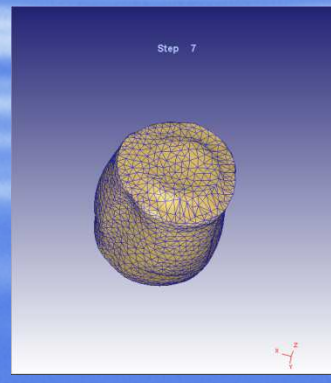
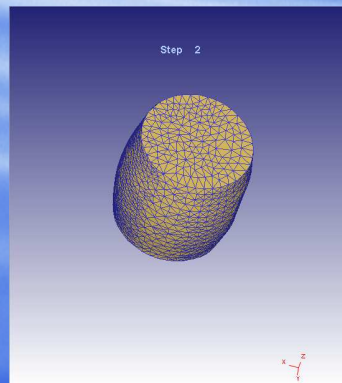
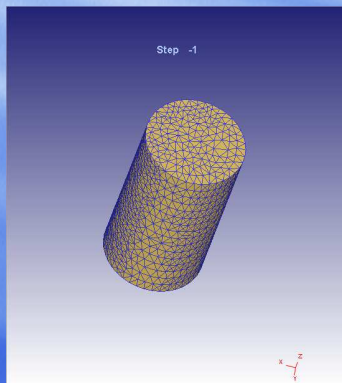
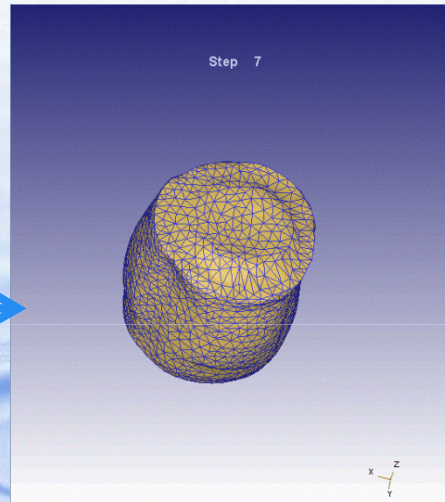
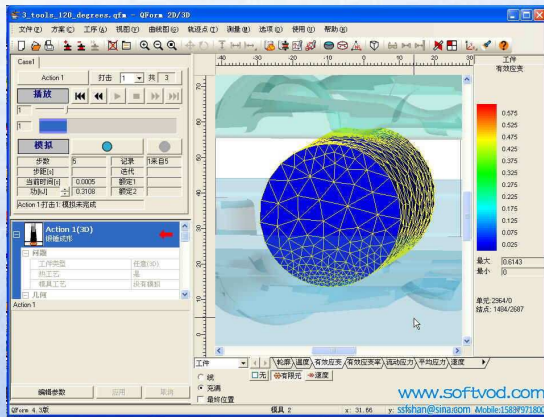
ISO:14001  
ISO/TS:16949

Main material supplier

SN	Supplier Name	Material	duration	Quality data
1	上钢五厂	8620H	15 years	Good
	baosteel	45#		
2	东北特钢	8620RH	12 years	Good
	Dongbei Special Steel	40Cr		
3	大冶特钢	60#	12 years	Good
	Daye Special Steel	45#		
4	江阴兴澄特钢	42CrMo	12 years	Good
	XingCheng Steel (CPS)	40Cr		
		20CrMnTi		
5	石家庄钢厂	40Cr	10years	Good
	shijiazhuang steel	60#		
		45#		



### Forging Simulation





## Tooling Manufacturing equipments





## Medium -frequency induction heating machine





浙江正昌锻造股份有限公司  
ZHEJIANG ZHENGCHANG FORGING CO.,LTD



ISO:14001  
ISO/TS:16949

Digital control screw press

Tonnage: 250T-----1000T







# 浙江正昌锻造股份有限公司

## ZHEJIANG ZHENGCHANG FORGING CO.,LTD



ISO:14001  
ISO/TS:16949

### Cold coining hydraulic press

Tonnage: 120T---1200 T





浙江正昌锻造股份有限公司  
ZHEJIANG ZHENGCHANG FORGING CO.,LTD



ISO:14001  
ISO/TS:16949

Numerical Control Lathe  
QTY: 21 sets





# 浙江正昌锻造股份有限公司

## ZHEJIANG ZHENGCHANG FORGING CO.,LTD



ISO:14001  
ISO/TS:16949

### CNC Machining center QTY: 10 sets





## Main machining equipment

Name	Type	QTY	Name	Type	QTY
NC milling machine	BM-2040CNC	2台	Honing machine	HM1860	7台
	XK7145A	21台	Turning machine	CD6140A	2台
Normal milling	X5032A	11台		C0630	13台
Vertical drill	Z5140B	11台	Flat grinding	7132M	2台
NC turning	CJK6150H	21台	Universal grinding	1432A	1台
Drill plus mill	X54242A	1台	Bench drill	Z512-2	8台
Horizontal mill	X6132	10台	Tool grinder	MA6025	1台
CNC	CMV-920	10台	peripheral milling	MA1420A	1台



### Inspection equipments

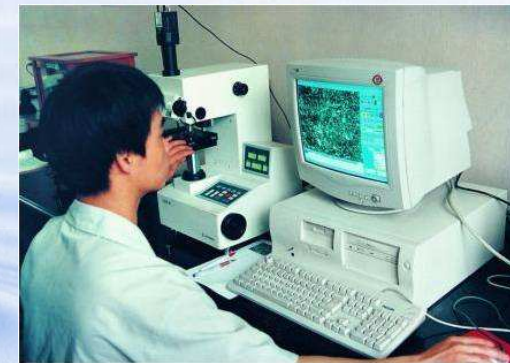
magnetic particle inspection



Profile inspect machine



metallurgical analysis apparatus



tensile testing machine



Hardness tester



Roughness tester



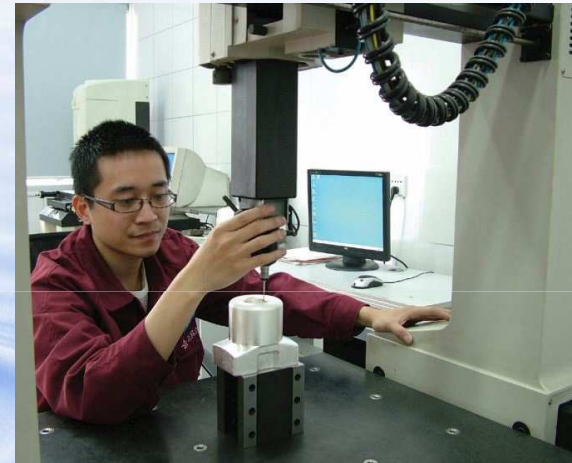


### Inspection equipments

#### Direct read spectrometer



#### CMM



#### Micro hardness tester



#### horizontal metallurgical microscope



#### Layer thickness tester





浙江正昌锻造股份有限公司  
ZHEJIANG ZHENGCHANG FORGING CO.,LTD



ISO:14001  
ISO/TS:16949

Zhejiang Zhengchang Daosen Group Co.,Ltd



### Basic Data :

- Capital : 120 Million RMB
- Founded : 2008
- subsidies: 32 companies
- Landing area: 25 acres
- Target: 800 million RMB



# 浙江正昌锻造股份有限公司

## ZHEJIANG ZHENGCHANG FORGING CO.,LTD

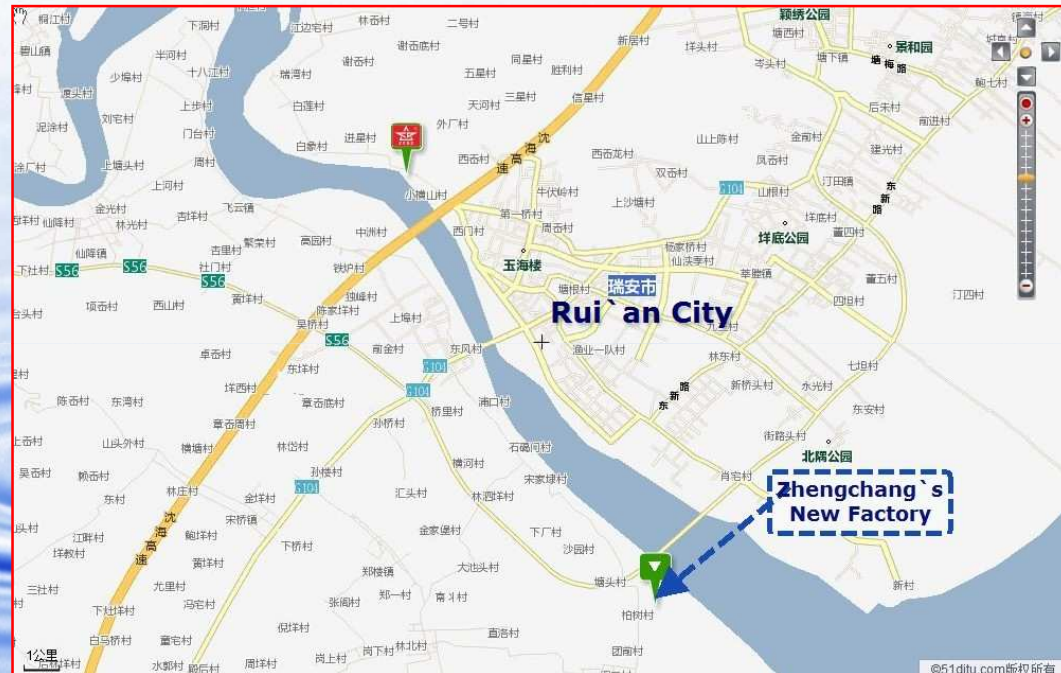


ISO:14001  
ISO/TS:16949

制造设备 Equipment



New factory in Rui'an economic development zone







## 发展规划 Investment plan

我司二期厂房已经进入工程设计阶段，建成后的新厂房位于市经济开发区阁巷新区15号，占地35亩，集研发、生产、销售于一体。计划投入2.2亿元人民币，引进世界先进的自动化生产和检测设备，主要生产汽车配件、火车机车配件、矿山机械、有色金属等系列产品，专门为汽车主机厂及输配电行业配套。从原材料进厂到成品，工艺设计引进三维有限元锻造分析，整个生产过程采用计算机条形码管理和生产信息化管理，打造国内一流的锻造、热处理及机加工生产企业。目前，厂房已经进入设计评审阶段，整个进程正按计划时间顺利进行，预计两年后可投入生产。

- ❖ The second factory of Zhengchang is located at Rui'an Economical development zone, about 20 minutes` driving away from current factory. The total landing area of the new factory is about 24,000.0 m<sup>2</sup> with a investment proximately about 220 millions RMB. Facilitated by advanced automatic manufacturing and inspection equipment, the new factory will continually focused on auto industry, railway industry and non-ferrous metal parts industry, Provide OEM service for local Chinese big OEMS and oversea market. Bar code system and information management system will be applied through the whole manufacturing process from raw material, forging to finished parts. Three-dimensional finite element method will introduced for the forging design process. The final mission is to establish an advanced, first-class, modern production lines combined with forging, machining, heat treatment.

The new factory currently is under designing process and will be put into use in two years according to the project schedule.



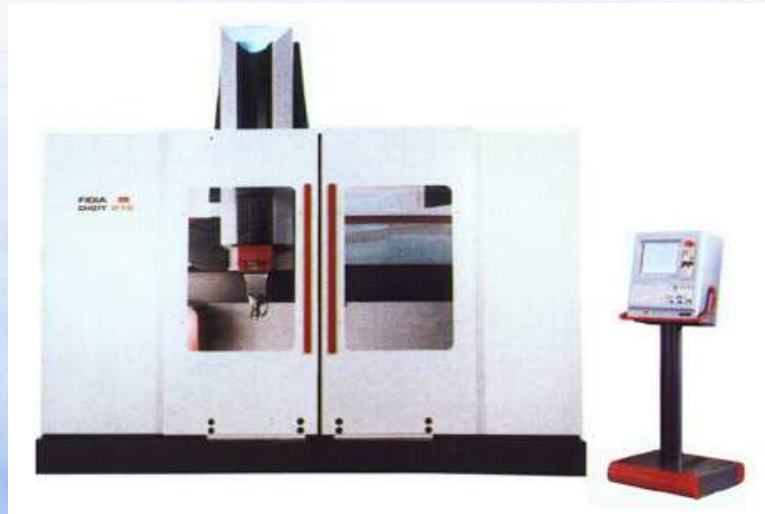


**浙江正昌锻造股份有限公司**  
**ZHEJIANG ZHENGCHANG FORGING CO.,LTD**



ISO:14001  
ISO/TS:16949

## **New equipment plan for tool**



**Plan:**

**End of 2011**

**1.High speed milling center**

**2.NC Electric sparking machining  
equipment**



# 浙江正昌锻造股份有限公司

## ZHEJIANG ZHENGCHANG FORGING CO.,LTD



ISO:14001  
ISO/TS:16949



**Plan:2011~2012 buy 400-  
2500ton hot die forging  
machine**



# 浙江正昌锻造股份有限公司

## ZHEJIANG ZHENGCHANG FORGING CO.,LTD



ISO:14001  
ISO/TS:16949

**Plan:**

**End of 2011~2012**

**1 箱式气体渗碳淬火生产线**

**box type gas carburizing and quenching line**

**2 网带淬火炉**

**Belt Carburizing Quenching Furnace**

**3 自动通过式清洗机**

**automatic cleaning line**





浙江正昌锻造股份有限公司  
ZHEJIANG ZHENGCHANG FORGING CO.,LTD



ISO:14001  
ISO/TS:16949



*Thanks*